



# Performance Management & Capacity Planning with Rocket® TMON™ One

---

Ensure hybrid cloud  
application availability,  
optimize mainframe capacity,  
and reduce costs.



# Introduction

TMON One, Rocket Software's performance management and capacity planning solution, helps enterprises realize the true potential of their hybrid cloud applications and IT systems. It effectively monitors and manages modern IBM Z® environments and connected systems, optimizing performance and availability with the fastest time-to-implementation and the lowest total cost of ownership (TCO).

TMON One continuously checks the health, availability, and performance of the system and subsystem resources critical to your business applications. Its integrated monitors offer an end-to-end view of application performance and capacity, ensuring that operating systems, middleware, databases, and network components operate efficiently.

With the industry's fastest implementation time, lowest TCO, and flexible licensing, TMON One provides your business with the tools needed to successfully manage hybrid cloud applications and IT systems.

**The big challenge:** How do you minimize the cost of running your hybrid cloud applications while ensuring your IT resources are always available when needed?



# The Reality

Many performance and capacity challenges stem from the IT resources supporting hybrid cloud applications. Enterprises are seeking more advanced ways to manage these issues efficiently.

Mainframes remain critical for running mission-critical workloads, such as commercial databases, transactional systems, and highly secure applications. Optimizing mainframe for performance and capacity is crucial for controlling costs.

With 85% of IT leaders increasing their infrastructure budgets, it's important to make the most of mainframe investments. Solutions like TMON One can help manage mainframe performance, forecast capacity needs, and maintain your business applications health while keeping costs optimal.

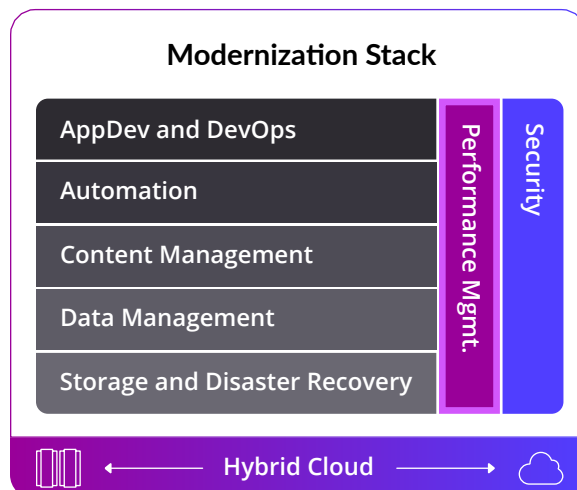
## What performance issues are impacting your business?

When we talk to customers, they often highlight these roadblocks:

- Identifying costly, unplanned system and application outages
- Finding the root causes of application slowdowns
- Reducing IT costs that negatively impact budgets and revenue-generating projects
- Forecasting capacity requirements in a complex IT landscape
- Gaining a complete view of hybrid cloud application performance

Additionally, IT leaders often use multiple, unintegrated tools, which increase the total cost of ownership. To improve performance management and capacity planning, user-friendly tools with modern interfaces and automation are a must.

**Modernize**  
application  
performance  
across your  
hybrid IT  
infrastructure



## The Modernization Worry List

- How do I improve productivity and agility to stay ahead of my customers' needs?
- How quickly and effectively can I integrate my mainframe into my hybrid cloud strategy?
- How do I close my skills gap as experts leave while workloads continue to grow?
- How do I enhance cost-savings and ROI?
- How do I mitigate security and business risks in code and sensitive data?
- How do I achieve greater infrastructure flexibility and scalability?

**How do I scale  
business without  
breaking what  
works?**

# Enable Your Business to do More

Rocket TMON One monitors provide comprehensive performance management and capacity planning capabilities:

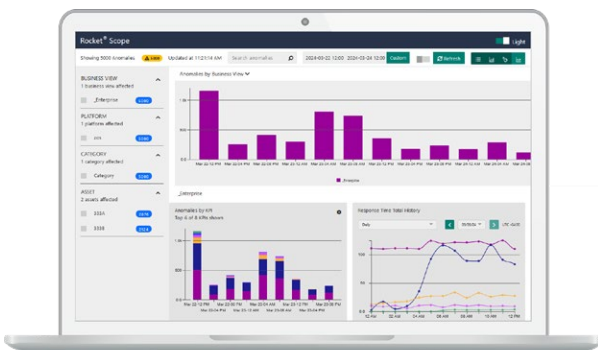
## TMON One Capabilities

- ✓ Visualization, analytics, and reporting of critical infrastructure and performance data
- ✓ Automated modeling and capacity planning
- ✓ Critical event detection
- ✓ End-user customizable, dynamically configurable presentation of performance metrics
- ✓ Browser delivered UI/UX on mobile devices
- ✓ RESTful API to access data for use by 3rd party applications

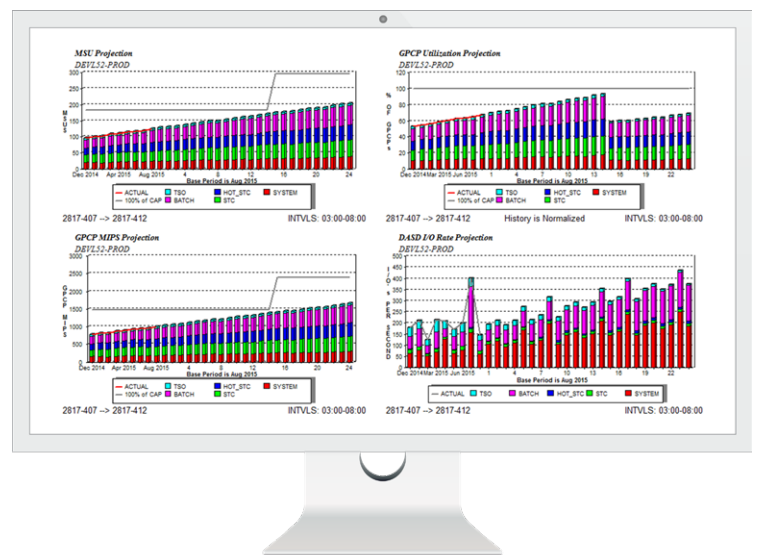
## Customer Benefits

- ✓ Enable performance management experts with easy-to-use modern dashboards to oversee application performance
- ✓ Ensure application resource availability
- ✓ Reduce the mean-time-to-repair (MTTR) of performance issues via automated recovery efforts delivered through notifications
- ✓ Personalize screens to get to the information you need efficiently
- ✓ Manage application performance wherever you are
- ✓ Get the most out of the data that TMON provides

**Integrate** real time performance and capacity monitoring with historical data metrics to improve Mean-time-to-repair (MTTR)



KPI Analysis



Capacity Management

# TMON One Solutions for Performance Management and Capacity Planning

## System Management

Dynamic monitoring for all areas of your enterprise's operating systems. It provides real-time alerts and performance information for critical software and hardware resources, guaranteeing that systems operate at peak performance and meet the needs of your business and users. It includes both short-term and long-term online historical data for analyzing performance and capacity metrics.

## Online Transaction Monitoring

An integrated solution to quickly pinpoint the root cause of problems stemming from CICS TS or related environments, including CICS® Transaction Gateway on z/OS®, Db2®, WebSphere, MQ®, network interfaces, Java™ applications, IMS™, and more. It provides staff with the information necessary to successfully meet the demands of dynamic application environments.

## Database and Storage

Proactively manage database performance and availability on zSystems® and distributed platforms. Quickly identify the root cause of issues in Db2 and IMS environments. From high-level Db2 subsystem details to the low-level performance impact of an SQL statement, it provides the information needed to improve business application availability.

## Network and Messaging

Monitor, manage, and enhance your while keeping track of response times for your end-users. Gain full visibility into your network to know when problems are impacting your end-users before they call the help desk. Measure application network traffic to maintain effective control over your systems and networks.

## Capacity Management

Ensure system and application availability through a holistic view of performance and capacity planning. Use a consistent user interface, along with clear graphs and reports. This includes both proactive and reactive capacity management across different environments. Prevent unnecessary hardware purchases, maximize expensive resources, and communicate accurate and actionable information.

## Supported IT Environments





# About Rocket Software

Rocket Software is the global technology leader in modernization and partner of choice that empowers the world's leading businesses on their modernization journeys, spanning core systems to the cloud. Trusted by over 12,500 customers and 750 partners, and with more than 3,000 global employees, Rocket Software enables customers to maximize their data, applications, and infrastructure to deliver critical services that power our modern world. Rocket Software is a privately held U.S. corporation headquartered in the Boston area with centers of excellence strategically located around the world. Rocket Software is a portfolio company of Bain Capital Private Equity. Follow Rocket Software on [LinkedIn](#) and [X \(formerly Twitter\)](#) or visit [RocketSoftware.com](https://RocketSoftware.com) to learn more.

**Modernization.** Without Disruption.™

Visit [RocketSoftware.com](https://RocketSoftware.com) >



© Rocket Software, Inc. or its affiliates 2024. All rights reserved. Rocket and the Rocket Software logos are registered trademarks of Rocket Software, Inc. Other product and service names might be trademarks of Rocket Software or its affiliates.

IBM, zSystems, Db2, CICS, IMS and z/OS are trademarks of International Business Machines Corporation, registered in many jurisdictions worldwide.

MAR-11018\_TMON\_Brochure\_v6

**Talk to an expert**

**Request a demo**

